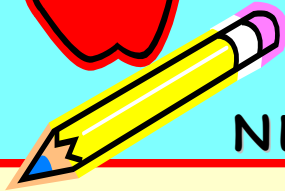


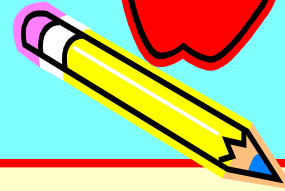


Cranmere Primary School,  
Arran Way, Esher, KT10 8BE  
[www.cranmereprimary.org.uk](http://www.cranmereprimary.org.uk)



**YEAR 4**

**NEWSLETTER**



# Summer Newsletter

## In English this term:

### Literacy

Free Fall - Writing fantasy stories. Focus on descriptive writing and dialogue.

Persuasive writing linked to World War 2.

My Secret War diary and Diary of Anne Frank.

Performance poetry

### Grammar

Expanded noun phrases

Determiners

Prepositions

Place the possessive apostrophe accurately in words with regular plurals e.g girls' toys and words with irregular plurals e.g children's

Forms of 'a' 'an'

Commas to separate clauses

Using correct verb inflections e.g We were instead of We was

Understand the grammatical difference between plural and possessive - s

Understand the Terminology Determiner, pronoun, possessive pronoun and adverbial.

### Spellings

tion

ous

ation

ssion

S sounds spelt Sc

Homophones revisit

## Suggested activities to help your child in literacy this half term:

<http://www.primaryhomeworkhelp.co.uk/interactive/literacy2.htm>

## In Maths this term:

Count in multiples of 6,7,9,25 and 1000.

Revisiting place value and the 4 operations and related problems

Position and direction-describe positions on a 2D grid as co-ordinates in the first quadrant.

Describe movements between positions as translations of a given unit to the left/right and up/down

Statistics- Interpret and present discrete and continuous data using appropriate graphical methods, including bar charts and time graphs.

Measures-time Read, write and convert time between analogue and digital 12 -24 hour clocks

Solve problems involving converting from hours to minutes; minutes to seconds; years to months; weeks to days.

Revisit all areas of through problem solving.

Identify and represent and estimate numbers using different representations.

Solve problems involving multiplying and adding including the distributive law to multiply 2 digit numbers by 1.

Solve problems involving increasingly harder fractions to calculate quantities and fractions to divide quantities including non - unit fractions where the answer is a whole number.

Identify lines of symmetry in 2 D shapes presented in different orientations.

## Suggested activities to help your child in maths this half term:

<http://www.bbc.co.uk/bitesize/ks2/maths/>

## Other curriculum areas this half term: (please see Topic Web for more information)

History: WW2

Science: States of matter, Living things and their Habitats

Art/DT: WW2 art, pastel pictures, painting of the Blitz skyline, money pouches linked to rationing

French: Rigolo

RE: What does it mean to be a Hindu? What does it mean to be a Jew?

Computing: We are meteorologists-presenting data  
Coding Scratch

PE: Dance WW2 related, Athletics

Music: Charanga recorders-composing WW2 related songs

PSHCE : Relationships, Changes getting prepared for Year5, Wider world

## Useful websites for this half term's curriculum learning:

[http://www.bbc.co.uk/schools/primaryhistory/world\\_war2/](http://www.bbc.co.uk/schools/primaryhistory/world_war2/)

### General Messages:

**Pencil cases:** Another polite request that children only bring in one pencil case containing only essential stationary items. Ideally, this pencil case should be able to fit in the children's trays in the classroom.

**PE kits:** A reminder that school policy now specifies that children should not be borrowing kit from other children should they forget theirs. All children need their PE kits on **Mondays** and **Thursdays**.

**Residential:** Our residential trip is fast approaching! A meeting for parents/carers was held on Thursday 19th April. If you still owe any money, we would be grateful if you would pay online as soon as possible.

### Important dates:

School restarts for summer term-Monday 16th April  
Wed 18th April-Road Safety training  
Thursday 19th April Hindleap Warren meeting 2:45  
Monday 23rd April-St George's Day children to wear red,white or blue  
Friday 4th May Anti bullying day  
Bank Holiday 7th May-school closed  
Friday 18th May Royal Wedding Dressing Up  
Hindleap Warren residential  
23-24th May  
Friday 25th May-INSET staff only to attend.  
HALF TERM May 28th-Friday 1st June  
Week 25th June Art Exhibition  
Thurs 28th June WW2 dressup as an evacuee  
Friday 13th July Habitats workshop  
Thursday 19th July LAST DAY OF TERM